

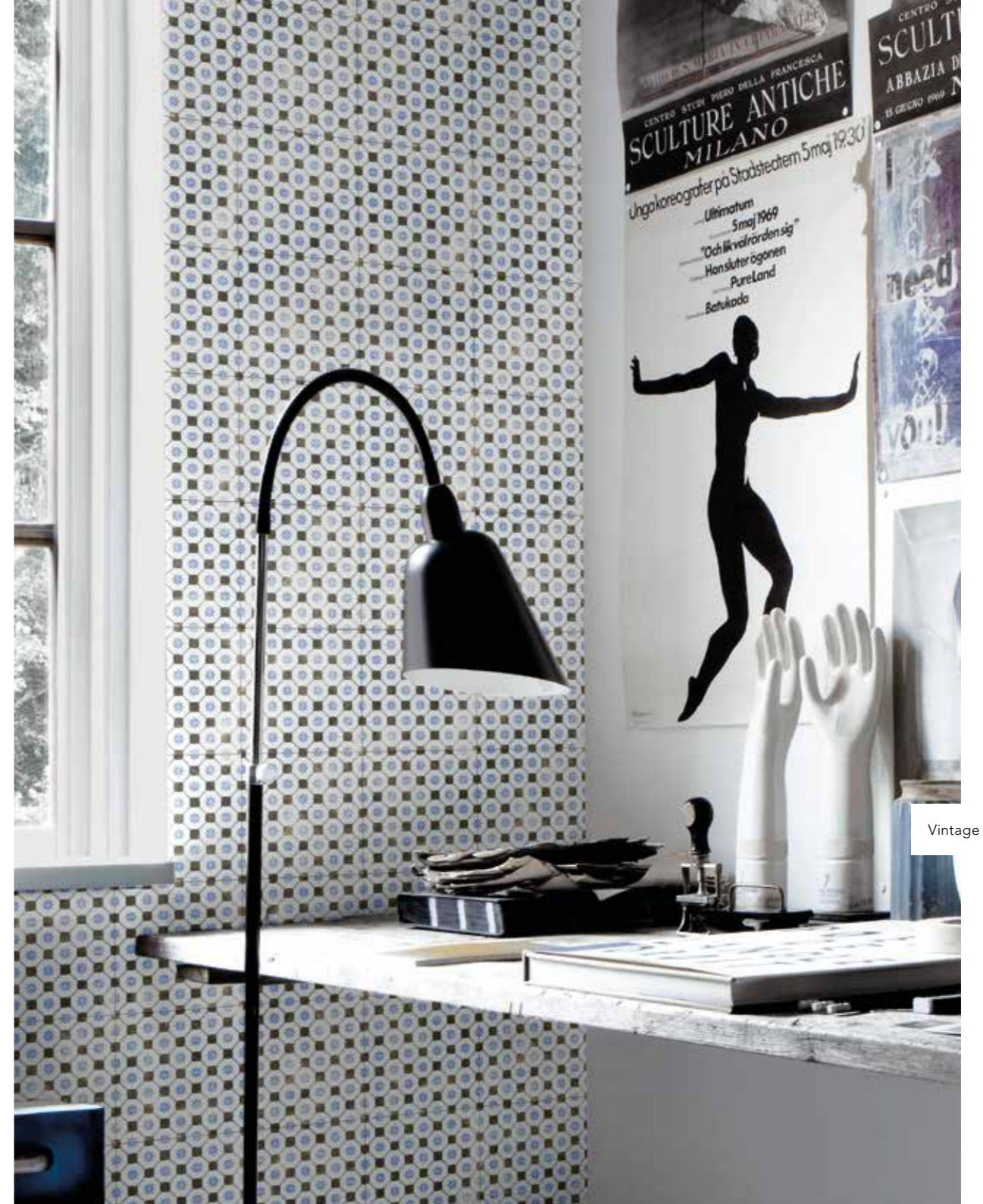
A vintage interior scene featuring a large, ornate gold mirror with a highly decorative, scrolled frame. A thick, long pink feather boa is draped over the left side of the mirror. The background wall is covered in a patterned wallpaper with a repeating diamond or lattice motif in shades of grey and white. In the reflection of the mirror, a white window shutter and a white shelving unit are visible. The overall aesthetic is classic and elegant. A dark teal rectangular overlay is positioned on the right side of the image, containing the text 'MARINER' and 'VINTAGE'.

MARINER

VINTAGE

V<sub>2</sub>

Vintage 12

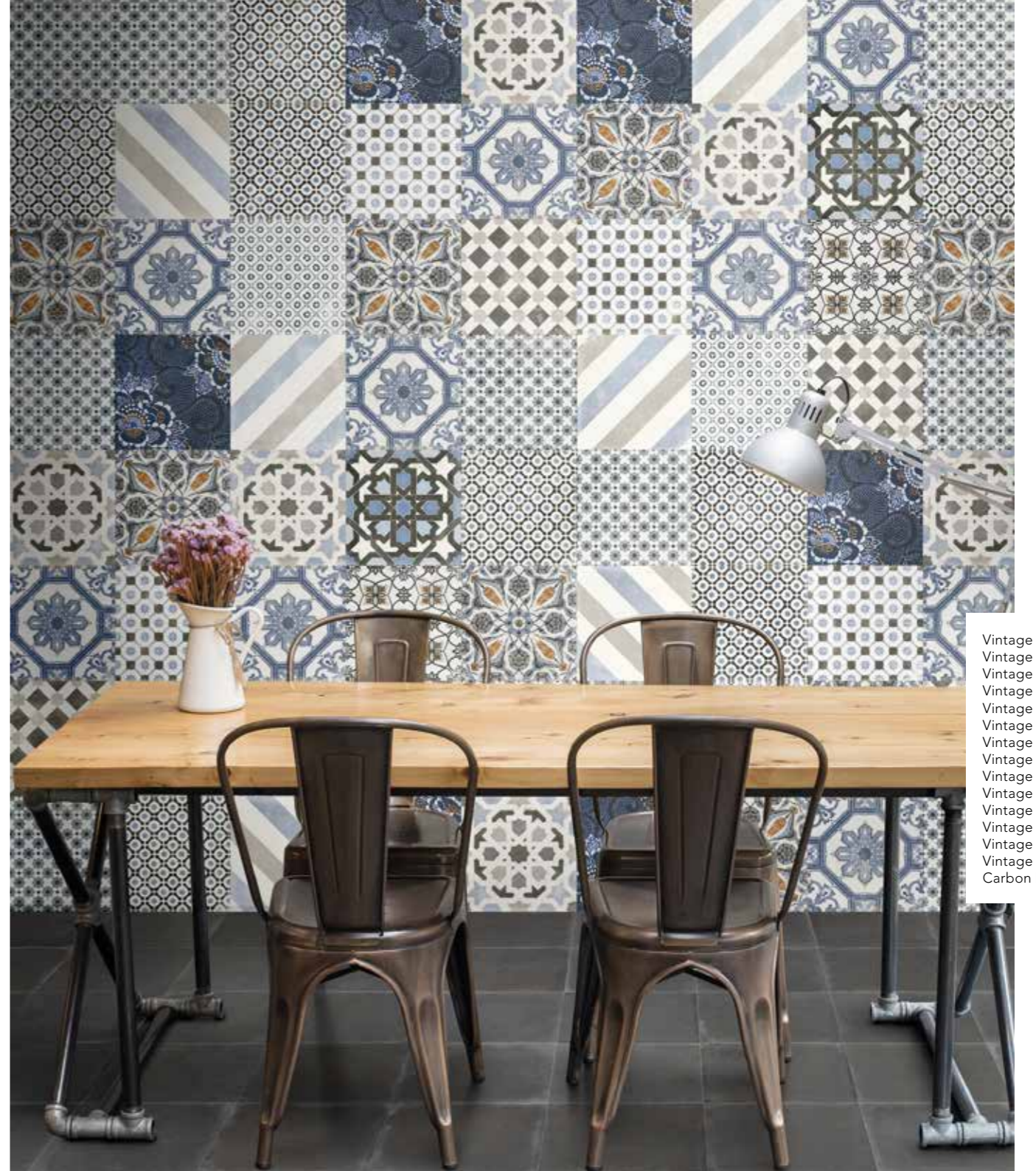


Vintage 10

V<sub>4</sub>



Vintage 5  
Cloudy White/Bianco  
Ocean Blue / Avio



- Vintage 1
- Vintage 2
- Vintage 3
- Vintage 4
- Vintage 5
- Vintage 6
- Vintage 7
- Vintage 8
- Vintage 9
- Vintage 10
- Vintage 11
- Vintage 12
- Vintage 13
- Vintage 14
- Carbon Black/Nero



Vintage 1  
Carbon Black/Nero

V8

Vintage 7  
Cloudy White/Bianco

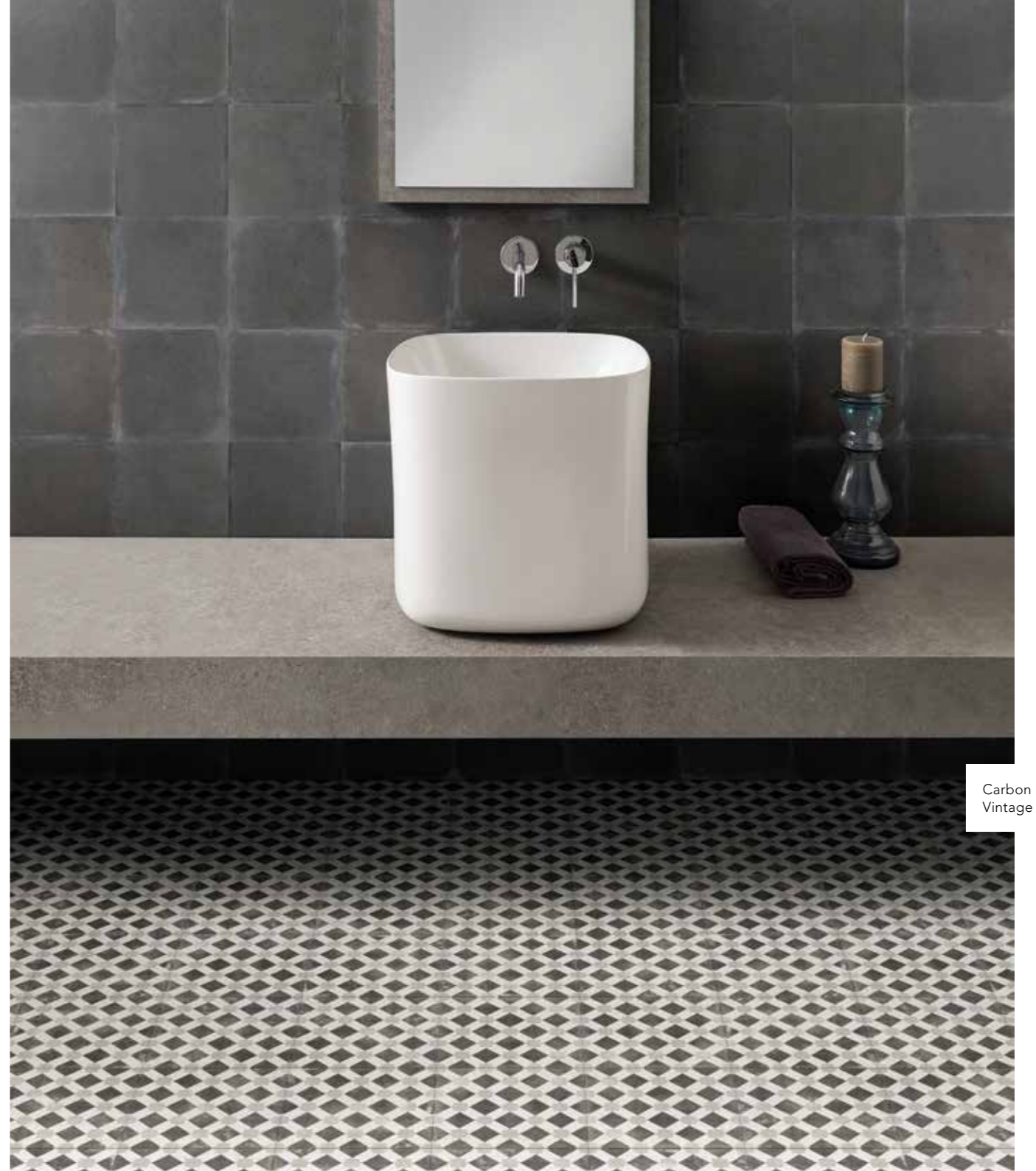


Vintage 9  
Cloudy White/Bianco

Vintage 3  
Vintage 4  
Vintage 6  
Vintage 10  
Vintage 12  
Vintage 14  
Cloudy White/Bianco



Vintage 4  
Cloudy White/Bianco  
Ocean Blue / Avio



Carbon Black/Nero  
Vintage 11

V<sub>14</sub>

Vintage 14



Vintage 13  
Carbon Black/Nero



V16

Vintage 16  
Cloudy White/Bianco  
Seafoam Green/Verde



Vintage 18  
Carbon Black/Nero

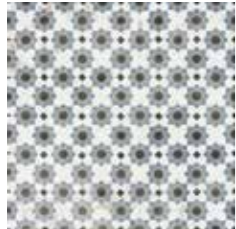
Vintage 15  
Cloudy White/Bianco  
Carbon Black/Nero



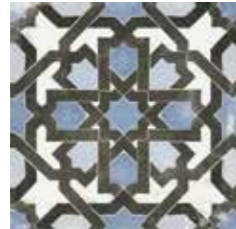
V<sub>20</sub>

20X20 8"X8" GRES PORCELLANATO SMALTATO GLAZED PORCELAIN TILE  
 SPESSORE 9,5 mm THICKNESS 0.38" INK JET DIGITAL TECHNOLOGY

# VINTAGE



20x20 8"x8" **148**  
**VIN1** Vintage 1



20x20 8"x8" **148**  
**VIN2** Vintage 2



20x20 8"x8" **148**  
**VIN3** Vintage 3



20x20 8"x8" **148**  
**VIN4** Vintage 4



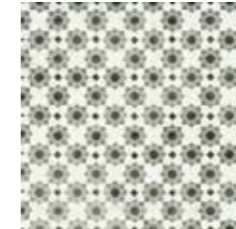
20x20 8"x8" **148**  
**VIN5** Vintage 5



20x20 8"x8" **148**  
**VIN15** Vintage 15



20x20 8"x8" **148**  
**VIN16** Vintage 16



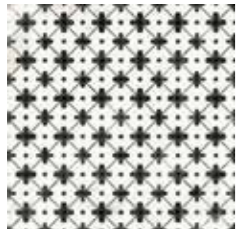
20x20 8"x8" **148**  
**VIN17** Vintage 17



20x20 8"x8" **148**  
**VIN18** Vintage 18



20x20 8"x8" **148**  
**VIN19** Vintage 19



20x20 8"x8" **148**  
**VIN6** Vintage 6



20x20 8"x8" **148**  
**VIN7** Vintage 7



20x20 8"x8" **148**  
**VIN8** Vintage 8



20x20 8"x8" **148**  
**VIN9** Vintage 9



20x20 8"x8" **148**  
**VIN10** Vintage 10

## fondi field tile



20x20 8"x8" **145**  
**VINBI** Cloudy White / Bianco



20x20 8"x8" **145**  
**VINGR** Grey Mist / Grigio



20x20 8"x8" **145**  
**VINNE** Carbon Black / Nero



20x20 8"x8" **145**  
**VINAV** Ocean Blue / Avio



20x20 8"x8" **145**  
**VINVE** Seafoam Green / Verde



20x20 8"x8" **148**  
**VIN11** Vintage 11



20x20 8"x8" **148**  
**VIN12** Vintage 12



20x20 8"x8" **148**  
**VIN13** Vintage 13



20x20 8"x8" **148**  
**VIN14** Vintage 14












	pcs/box	mq/box	kg/box	box/pallet	mq/pallet	kg/pallet
20x20 8"x8" Vintage	26	1,04	20,90	64	66,56	1337,60

	pcs/box	mq/box	kg/box	box/pallet	mq/pallet	kg/pallet
20x20 8"x8" Vintage	26	1,04	20,90	64	66,56	1337,60

# VINTAGE

20x20 8"x8"

NORMA DI RIFERIMENTO SPECIFICATION REFERENCE **EN 14411** appendice **G** Bla **GL**

CARATTERISTICHE TECNICHE TECHNICAL FEATURES	NORMA STANDARD	VALORE PRESCRITTO VALUE REQUIRED	VINTAGE
DIMENSIONI - SIZE			
 ASSORBIMENTO ACQUA IN % % WATER ABSORPTION	EN ISO 10545/3 ASTM C 373	≤ 0,5 %	CONFORME COMPLY
 RESISTENZA AGLI SBALZI TERMICI THERMAL SHOCKS RESISTANT	EN ISO 10545/9	NESSUNA ALTERAZIONE VISIBILE - NO VISIBLE ALTERATION / UNAFFECTED	CONFORME COMPLY
 RESISTENZA AL GELO FROST/FREEZE RESISTANCE	EN ISO 10545/12	NESSUNA ALTERAZIONE VISIBILE - NO VISIBLE ALTERATION / UNAFFECTED	CONFORME COMPLY
 RESISTENZA AGLI AGENTI CHIMICI A BASSA CONCENTRAZIONE CHEMICAL AGENTS RESISTANCE AT LOW CONCENTRATION	EN ISO 10545/13	VALORE DA DICHIARARE VALUE TO BE DECLARED	GLA
	ASTM C 650	CLASS A - CLASS E	CLASS A
 RESISTENZA AI PRODOTTI CHIMICI DI USO DOMESTICO E AGLI ADDITIVI PER PISCINA - RESISTANCE TO DOMESTIC CHEMICAL PRODUCTS AND ADDITIVES FOR SWIMMING POOLS	EN ISO 10545/13	MINIMO GB MINIMUM GB	GA
 RESISTENZA ALLO SCIVOLAMENTO SLIP RESISTANCE (ANTI-SLIP)	DCOF (ANSI A 137.1)	≥ 0,42	CONFORME COMPLY
 RESISTENZA ALL'ABRASIONE ABRASION RESISTANCE	EN ISO 10545/7	VALORE DA DICHIARARE VALUE TO BE DECLARED	da 2 a 5 in base al colore from 2 to 5 according to color
 RESISTENZA ALLA FLESSIONE (N/mm <sup>2</sup> ) FLEXURAL STRENGTH TEST (N/mm <sup>2</sup> )		≥ 35 N/mm <sup>2</sup>	CONFORME COMPLY
 SFORZO DI ROTTURA (N) BREAKING STRENGTH (N)	EN ISO 10545/4	SPESSORE ≤ 7,5 mm THICKNESS ≤ 7,5 mm	≥ 700 N
		SPESSORE ≥ 7,5 mm THICKNESS ≥ 7,5 mm	≥ 1300 N
SFORZO DI ROTTURA (lbf) BREAKING STRENGTH (lbf)	ASTM C 648	AVERAGE ≥ 250 lbf INDIVIDUAL ≥ 225 lbf	CONFORME COMPLY
 RESISTENZA ALLE MACCHIE STAIN RESISTANCE	EN ISO 10545/14	≥ CLASSE 3	CONFORME COMPLY
	ASTM C 1378	CLASS A - CLASS E	CLASS A
 GRADO DI VARIAZIONE CROMATICA AESTHETIC CLASSES	ANSI A137.1	V0 - V4	V3



Vintage 8

